



2014 ICF Canoe Slalom Ranking

# Kanu-Slalom Weltrangliste

## Kanupark Markkleeberg 18.-21.4.2014

mit  **Sprint Cup**  
am Ostermontag, 21.04.2014



STADT MARKKLEEBERG



Stadt Leipzig

# Information Bulletin



2014 ICF  
Canoe Slalom Ranking  
Markkleeberg

Kanupark 18.-20.4.2014

Infos + Zeitplan unter [www.slalomevents.de](http://www.slalomevents.de)



## WORDS OF INTRODUCTION

The Organising committee welcomes all athletes, team leaders, coaches, functionaries and guests to the 2014 ICF Canoe Slalom Ranking Markkleeberg. This Level 3 event will take place on Kanupark Markkleeberg, one of the recent White-Water courses in the world, from 18<sup>th</sup> April to 20<sup>th</sup> April 2014. Furthermore we will organise the **Sparkassen Sprint Cup** with total prize money of 4.950 EUR on 21<sup>st</sup> April 2014.

The information listed below should give you a review and support preparing for this event. Please note that some information is for the present.



Christoph Kirsten  
President of Organising Committee  
Leipziger-Kanu-Club e.V.

## TABLE OF CONTENTS

Important key dates	2
Venue	3
Competition rules / Events / Competition races / Entries	4
Provisional time schedule	5
Participation fee / Team Leaders meeting / Race progressions	6
Training sessions / Boat control / Boat storage	7
First aid service / Water safety / Anti-Doping control	7
Press and media information / Accommodation	8
Access to Kanupark Markkleeberg	8
Tickets for spectators / Parking rules	9
Contact details	10

## IMPORTANT KEY DATES

04/04/14	Nominal entries deadline
14-18/04/14	Training period
18/04/14	Team Leaders Meeting
19/04/14	Heats (K1M, C1W, C1M, K1W, C2M)
20/04/14	Semi-finals / Finals (K1M, C1W, C1M, K1W, C2M)
21/04/14	Sparkassen Sprint Cup

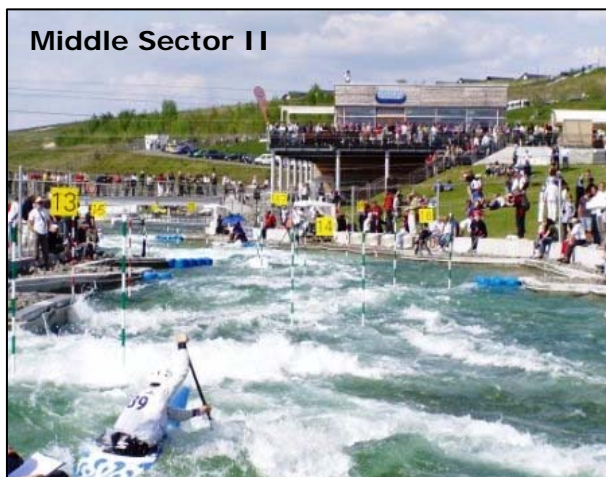




## VENUE

### Kanupark Markkleeberg

The course was built in 2006 and host of different national and international competitions during the last five years. The course has a length of 270 m and a drop of 5.70 m. The amount of water will be 14 m<sup>3</sup>/s (white water level III-IV).



## COMPETITION RULES

2014 ICF Canoe Slalom Ranking Markkleeberg will be organized in accordance to the ICF Slalom Racing Competition Rules.

## EVENTS

<b>Men:</b>	Kayak Single	K1M	<b>Women:</b>	Kayak Single	K1W
	Canoe Single	C1M		Canoe Single	C1W
	Canoe Double	C2M			

## COMPETITION RACES

Besides the ICF Ranking Series (World Ranking, max. 6 boats per event per national federation) we will offer the attendance of further boats of every national federation on a support race, International Open Competition. We will start each event with the boats of the International Open Competition and continue with the athletes of the ICF Ranking Race. In addition all athletes can take part in the Sparkassen Sprint Cup on Monday, 21<sup>st</sup> April 2014.

## ENTRIES

### Nominal Entries for ICF Ranking Series

...have to be done only by **ICF online entry system**: [www.canoeicf.com](http://www.canoeicf.com)

**Please note...**

- ... the following **deadline for Nominal Entries**: **04/04/14.**
- ... that ICF Canoe Slalom Competition Rules articles 11.1 to 11.4 must be fulfilled.
- ... the maximum amount of boats per category per nation is **6** in accordance to the ICF Canoe Slalom Competition Rules 2.3.

### Nominal Entries for International Open Competition

...have to be sent by **email to [entries@slalomevents.de](mailto:entries@slalomevents.de)** by **national federations!**

**Please note...**

- ... the following **deadline for Nominal Entries**: **04/04/14.**
- ... that ICF Canoe Slalom Competition Rules articles 11.1 to 11.4 must be fulfilled.

### Nominal Entries for Sparkassen Sprint Cup

...have to be done by **email to [entries@slalomevents.de](mailto:entries@slalomevents.de)** or **writing by national federations** or the **athletes**.

**Please note...**

- ... the following **deadline for Nominal Entries**: **19/04/14 16:00.**



## PROVISIONAL TIME SCHEDULE

### Friday, 18/04/2014

08:00 - 14:00	Free training in groups
09:00 - 16:00	Free boat control
13:00 - 16:00	Delivery of bibs at the Organisation Office
14:00 - 15:30	Free training (open session, from 15:00 without gates)
15:30	Course setting Semi-finals / Finals course
16:30	Demonstration run for Semi-finals / Finals course
17:00	Course setting Heats course
17:30	Demonstration run for Heats course
19:00	Course closing
19:00 afterwards	Team leaders meeting at Competition Office Referees briefing

### Saturday, 19/04/2014 (Heats)

07:30 - 08:30	Delivery of bibs at the Organisation Office
08:00 - 09:00	Emergency boat control
08:00	Course Opening
08:15	Referees meeting
08:45	Forerunner
09:00	Heats 1 <sup>st</sup> run (K1M, C1W, C1M)
11:30	Heats 2 <sup>nd</sup> run (K1M, C1W, C1M)
14:00 - 14:45	Break
14:45	Forerunner
15:00	Heats 1 <sup>st</sup> run (K1W, C2M)
16:15	Heats 2 <sup>nd</sup> run (K1W, C2M)
17:30	Course Closing / Referees meeting

### Sunday, 20/04/2014 (Semi-finals/Finals)

09:30	Course Opening
09:45	Referees meeting
10:15	Forerunner
10:30	Semi-finals (K1M, C1W, C1M, K1W, C2M)
13:30 - 14:45	Break
14:45	Forerunner
15:00	Finals (K1M, C1W, C1M, K1W, C2M)
17:15	Award ceremony 2014 ICF Canoe Slalom Ranking Markkleeberg

### Monday, 21/04/2014

 **Sprint Cup**

10:00	Course Setting
10:30	Course Opening
11:30	Heats (1 run; K1M, C1W, C1M, K1W, C2M)
13:30	Break
15:00	Finals (1 run; K1M, C1W, C1M, K1W, C2M)
16:15	Award ceremony

**Please note:** Time schedule will be aligned after closing of nominal entries.



## PARTICIPATION FEE

The Participation fee will be **20.00 € per boat** which participating at the ICF Ranking Series or the International Open Competition. We will take a deposit of 50.00 EUR from each club/federation.

The payment of the participation fee has to be done **in cash** on-site during the delivery of bibs on Friday 18/04/14.

For the **Sparkassen Sprint Cup** we will charge a fee of **15.00 € per boat**. The payment of the participation fee has to be done **in cash** on-site on Sunday, 20/04/14. There will be separate bibs for the Sparkassen Sprint Cup. We will take a second deposit of 50.00 EUR from each club/federation.

## TEAM LEADERS MEETING

**Official Team Leaders meeting** will be held at **Competition Office on-site** on **Friday 18/04/14 19:00 - 20:00**.

## RACE PROGRESSIONS

For the 2014 Racing Season the ICF Canoe Slalom Committee has determined the progression to the semi-final and final for all **ICF Ranking races** will be as follows:

<u>Event</u>	<u>Semi-final</u>	<u>Final</u>
Men's K1	40	10
Women's C1	20	10
Men's C1	30	10
Women's K1	30	10
Men's C2	20	10

The race progression for the **International Open Competition** will be as follows:

<u>Event</u>	<u>Semi-final</u>	<u>Final</u>
Men's K1	10	5
Women's C1	10	5
Men's C1	10	5
Women's K1	10	5
Men's C2	10	5

Please note that these boats (coming from the International Open Competition heats) will start at the beginning of their respective events during the semi-finals and the finals. Furthermore it is not possible for boats coming from the International Open Race to receive ICF Ranking points.

The race progression for the **Sparkassen Sprint Cup** will be as follows:

The best ten boats from the Heats (1 run) in each event will be qualified for the Final run!

## TRAINING SESSIONS

If you want to book some training sessions before the competitions please contact me as soon as possible by email ([office@slalomevents.de](mailto:office@slalomevents.de)).

During the week before the competition (14/04/14 to 17/04/14) the cost for international participants will be 14.00 EUR each boat for 1 session of 60 min. You have to pay in cash. We will provide at least one session each day.

Furthermore we offer a free training in groups from 08:00 till 14:00 on Friday (18/04/14). The duration of these sessions will be 30 min. and depend on the total numbers of participants of the competition. From 14:00 - 15:30 all participants can train on the course (open session). Please note that we will remove the gates at 15:00.

Please have a look on the separate training schedule on-site.

Beyond the mentioned period you can book exclusive training sessions from the middle of March till the end of November 2014.

## BOAT CONTROL / BOAT STORAGE

**Free boat control:** Friday 18/04/14 09:00 - 16:00.

**Boat storage:** Please note that storage of boats between the training sessions and during the competition has to be made:

- not in windy areas
- not at escape routes or other roads/ways.

Please leave your boats on the place called "Sattelplatz" next to building (trailer place) and note that storage is on the owner's risk.

## FIRST AID SERVICE

During the event period (19/04 - 21/04/14) we will provide a **first aid service**. Please note that this medical service will cover only emergency cases and that all participants are responsible to arrange, at their cost, their own medical insurance policy.

## WATER SAFETY

During the event period (19/04 - 21/04/14) we will provide a **water safety**.

## ANTI-DOPING CONTROL

**Anti-Doping control** will be performed in accordance with the **ICF Anti-doping requirements** and **WADA standards**.

## PRESS AND MEDIA INFORMATION

All **journalists** who like to cover the 2014 ICF Canoe Slalom Ranking Markkleeberg are requested to send an email to [info@slalomevents.de](mailto:info@slalomevents.de).

We will prepare an accreditation card for journalists and hand it out on Organisation Office on-site. Please use your Press-ID-Card to pass the entrance control staff during the event period.

## ACCOMMODATIONS



The **Atlanta Hotel International Leipzig** supports our canoe slalom events and is the perfect place to accommodate athletes, coaches, visitors and organisers. You will find more information on [www.atlanta-hotel.de](http://www.atlanta-hotel.de).

Furthermore you will find **accommodations** next to the course on the following websites:

City Markkleeberg: [www.markkleeberg.de/de/kultur\\_tourismus/uebernachten](http://www.markkleeberg.de/de/kultur_tourismus/uebernachten)

City Leipzig: [www.leipzig.travel/en/Plan\\_your\\_stay/Accommodation\\_2057.html](http://www.leipzig.travel/en/Plan_your_stay/Accommodation_2057.html)

Region Leipziger Neuseenland: [www.leipzigerneuseenland.de/en/accommodation](http://www.leipzigerneuseenland.de/en/accommodation)

## ACCESS TO KANUPARK MARKKLEEBERG

Kanupark Markkleeberg is situated in the South of the City Leipzig in Saxony:



### BY AIR

**LEIPZIG • HALLE AIRPORT** is situated in the North of City Leipzig next to highway A9 and highway A14 (<http://www.leipzig-halle-airport.de>).

### BY TRAIN

You can travel to **Leipzig central station** and take the TRAM 15 to station Markkleeberg-Ost (Schillerplatz). From this station you can walk (approx. 30 min.) in southward direction to Lake Markkleeberg and follow the lake on the east side to Kanupark Markkleeberg. ([www.mdv.de](http://www.mdv.de))





## BY ROAD

Kanupark Markkleeberg is situated next to **highway A38**. You can leave this highway in northward direction to City Markkleeberg and follow the main road B2. Leave main road B2 on first junction after approx. 3 km. Then follow the direction sign "Markkleeberger See" and "Kanupark".

## TICKETS FOR SPECTATORS

During 2014 ICF Canoe Slalom Ranking Markkleeberg and the Sparkassen Sprint Cup we will charge the following **entrance fees**:

<b>Saturday</b>	<b>19/04/14:</b>	-
<b>Sunday</b>	<b>20/04/14:</b>	<b>5.00 EUR</b>
<b>Monday</b>	<b>21/04/14:</b>	<b>5.00 EUR</b>

**Children aged less than 14 years do not have to pay for entrance.**

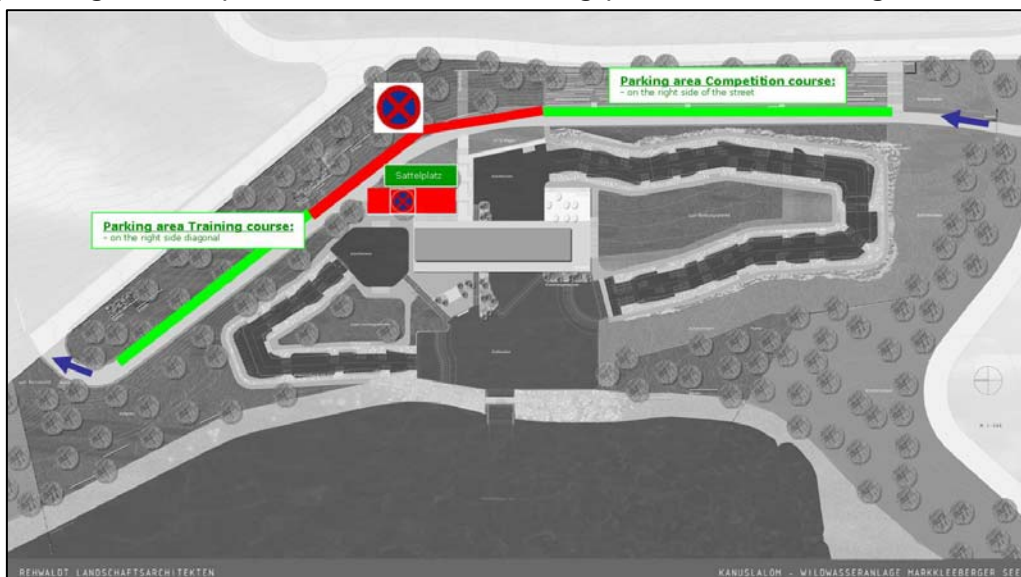
## PARKING RULES

During the training period (**14/04 - 18/04/14**) you can leave your cars at the special parking areas inside Kanupark. Please use just these areas and keep free the escape routes for the emergency services.

Because of the limited amount of parking areas please note that you have to park space-saving.

Furthermore take account of the following articles:

- Parking next to the competition course just on the right side of the street directly in front of the stand
- There is no parking in front of the bicycle stands
- Parking next to the training course on the right side (diagonal) is possible
- Leave your trailers on the "**Sattelplatz**" next to the starting pool of the competition course (**no car parking!**)
- no parking on the place next to the starting pool of the training course



During the event period (**19/04 - 21/04/14**) you can leave your cars at the special parking area outside Kanupark. We will close the roads "Zum Wildwasser", "Bootssteig" and "Wildwasserkehre". You get access to the special parking areas with parking permissions.

Please use just these areas and keep free the escape routes for the emergency services. Because of the limited amount of parking areas please note that you have to park space-saving.

Furthermore take account of the following articles:

- Use marked parking areas just outside the Kanupark area
- Parking parallel to the street just on the right side of the street
- There is no parking on footpaths, on the left side of the street and inside Kanupark area!
- Trailers you left on "Sattelplatz" you can pick up after the award ceremony on Sunday or after the Sparkassen Sprint Cup on Monday.

## CONTACT DETAILS

Leipziger-Kanu-Club e.V.  
Christoph Kirsten  
President of Organising Committee  
Wildwasserkehre 1  
04416 Markkleeberg  
Germany

Phone +49 / 160 / 365 44 72  
Fax +49 / 34 297 / 14 12 98  
Email [office@slalomevents.de](mailto:office@slalomevents.de)  
Web [www.slalomevents.de](http://www.slalomevents.de)